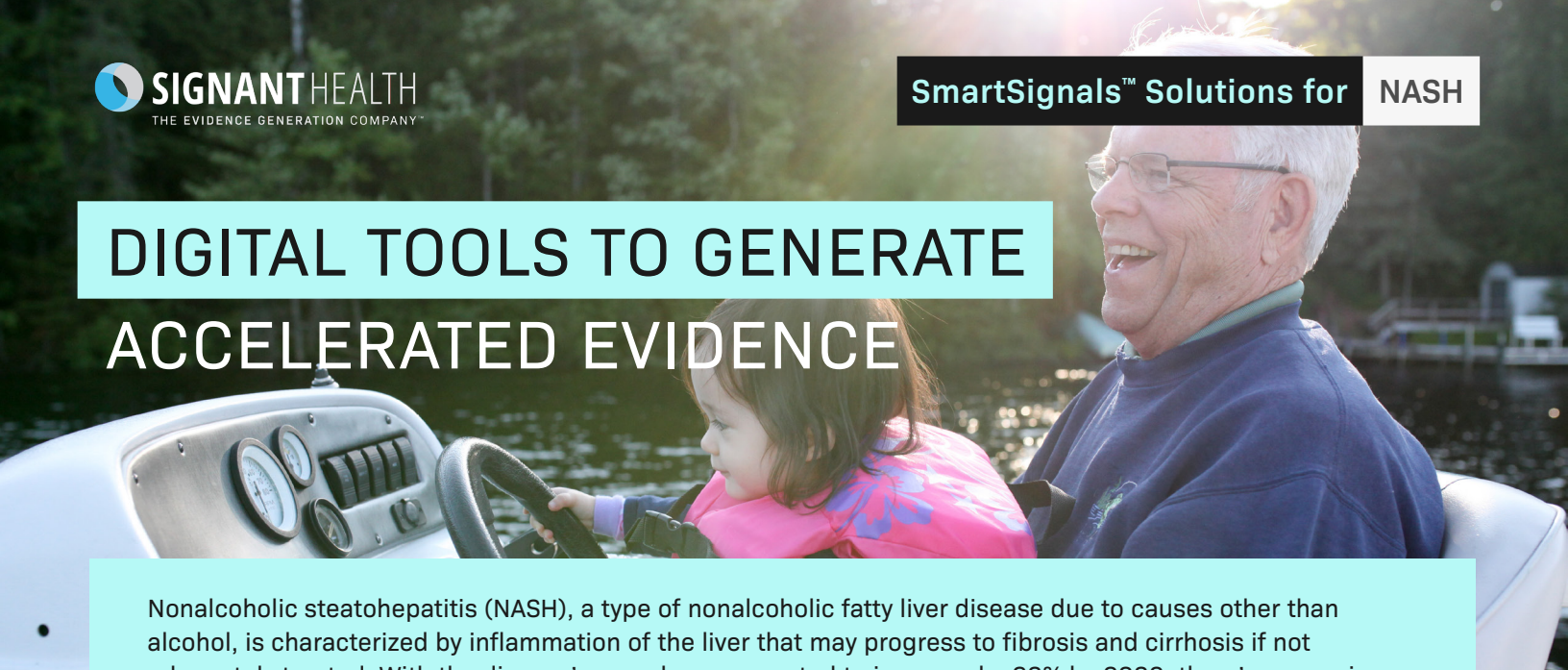


DIGITAL TOOLS TO GENERATE ACCELERATED EVIDENCE



Nonalcoholic steatohepatitis (NASH), a type of nonalcoholic fatty liver disease due to causes other than alcohol, is characterized by inflammation of the liver that may progress to fibrosis and cirrhosis if not adequately treated. With the disease's prevalence expected to increase by 63% by 2030, there's a pressing need to develop effective, new treatments. NASH studies face challenges, including poor retention rates and patients who suffer from comorbidities. Signant's SmartSignals solutions and team of experts provide the support needed to generate high-quality evidence.

COLLECT ACCURATE DATA

SmartSignals eCOA contains disease-specific questionnaires that assess the effect of treatment on quality of life and various functions. Its digital format eliminates the need to transcribe from paper in addition to providing time-stamped, original, and attributable data.

KEEP PATIENTS ENGAGED

Conveniently located on the same app as our eCOA solution, Signant's SmartSignals Patient Concierge promotes ongoing communication between sites and clinical trial patient. The engagement tool sends study updates and alerts for upcoming visits.

ALLEVIATE PATIENT CONCERNS

The SmartSignals eConsent solution uses engaging multimedia to educate potential participants on study requirements including biopsies. Designed to support various learning styles, the digital tool enables patients to flag sections they need further clarification on and checks their comprehension for a truly informed consent.

ASSESS COGNITIVE FUNCTIONS

Our Cognitive Assessments is a fit-for-purpose tool that detects subtle changes in mental capabilities to understand the treatment's effect on cognitive functions. The validated and highly sensitive disease agnostic tool precisely measures essential cognitive domains, including attention, information processing, executive function, as well as episodic and working memory.

TRACK SLEEP & ACTIVITY

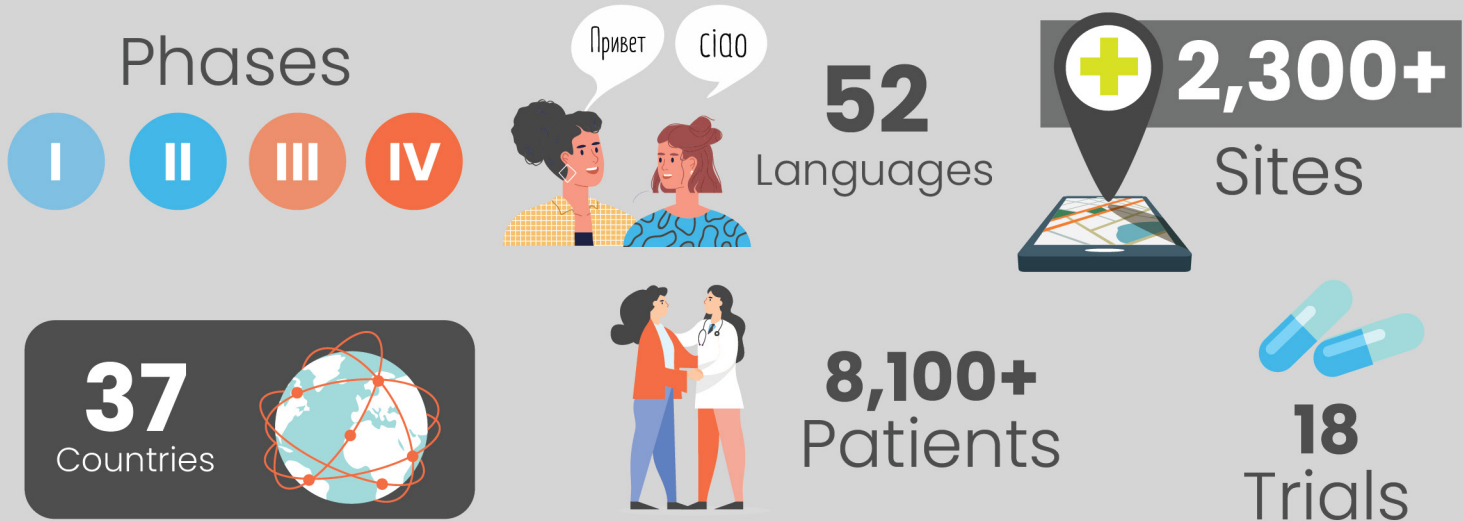
Integrating Actigraph sensors and wearables with our SmartSignals eCOA can provide valuable insights into the impact of the disease and treatment beyond liver fibrosis. The objective, real-time sleep and activity measures offer a better understanding of the overall impact of the disease and treatment on a patient's quality of life.

OFFER REMOTE CAPABILITIES

SmartSignals Telemedicine recreates the clinic experience in a virtual platform and can replace the visits that do not require in-person visits for blood tests, scans, or biopsies. Study teams will have an easier and more efficient way to check in on NASH patients.

At Signant, our SmartSignals solution suite was designed specifically to meet the needs of NASH sponsors, sites, and patients.

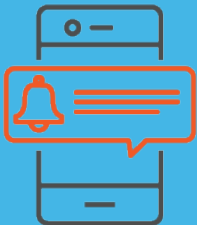
SIGNANT'S NASH CLINICAL TRIAL EXPERIENCE



SMARTSIGNALS SOLUTIONS

The SmartSignals solutions can be used individually or integrated together for a seamless, end-to-end digital experience.

eCOA



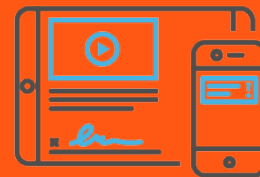
Telemedicine



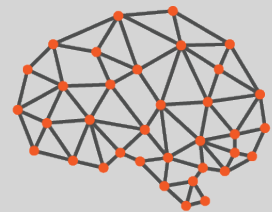
Activity Monitoring



eConsent



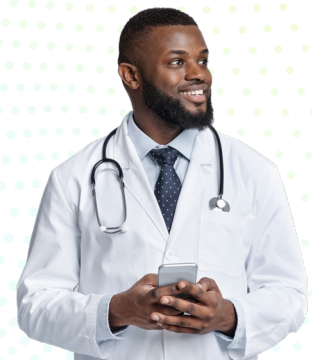
Cognitive Assessments



DISCUSS YOUR NEXT STUDY WITH US

Our global team of therapeutic area experts advise on all areas of the clinical development process, including:

- Clinical science and medicine
- Data analysis
- Regulatory
- Operations and trial administration
- Global logistics



MEET THE EXPERTS